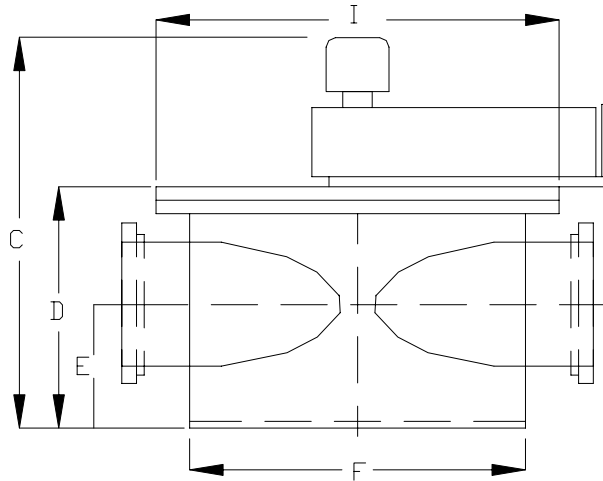
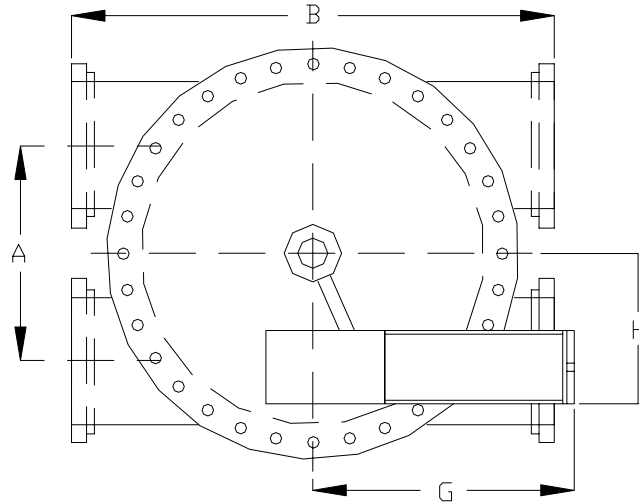


STANDARD 12" 4-WAY REVERSING VALVE  
(ALL DIMENSIONS IN INCHES)



DIMENSIONS (IN INCHES):

A = 20.5	D = 25.3	G = 24
B = 45	E = 12.8	H = 14
C = 36.8	F = 34	I = 40

WEIGHT (IN POUNDS):

DRY: 1,800  
FLOODED: 2,525

ATB SYSTEMS

WATER TECHNOLOGY OF PENSACOLA, INC.

WATERTECH@ATBSYSTEMS.COM  
TELEPHONE: (850) 477-4789

WWW.ATBSYSTEMS.COM  
FAX (850) 479-3056