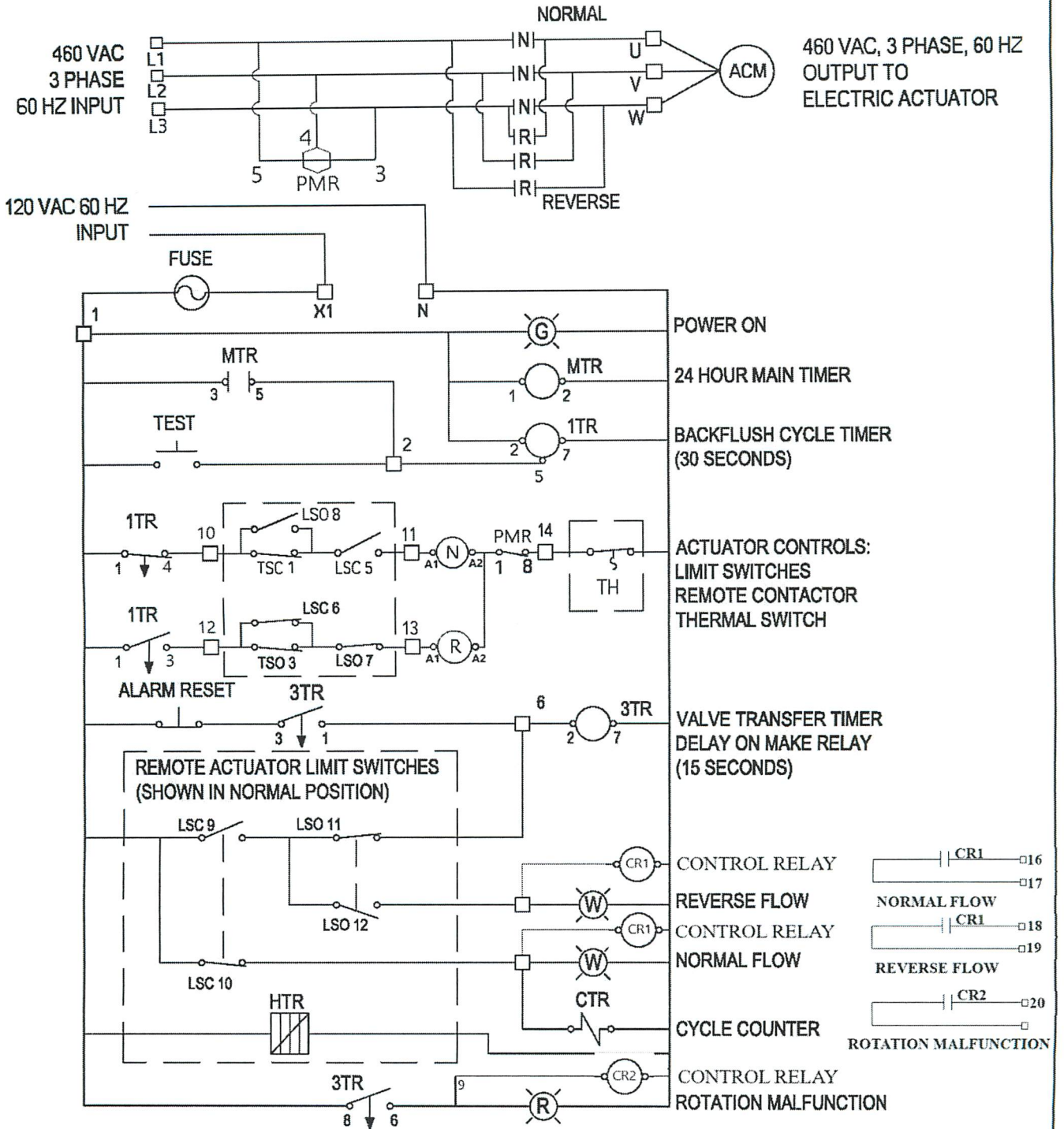


ABS STANDARD FLOW



NOTE: ITEMS SHOWN IN DASHED LINES ARE LOCATED
IN AUMA ELECTRIC ACTUATOR.

ABS STANDARD FLOW CONDITION.

WATER IN FROM LEFT, OUT TO RIGHT

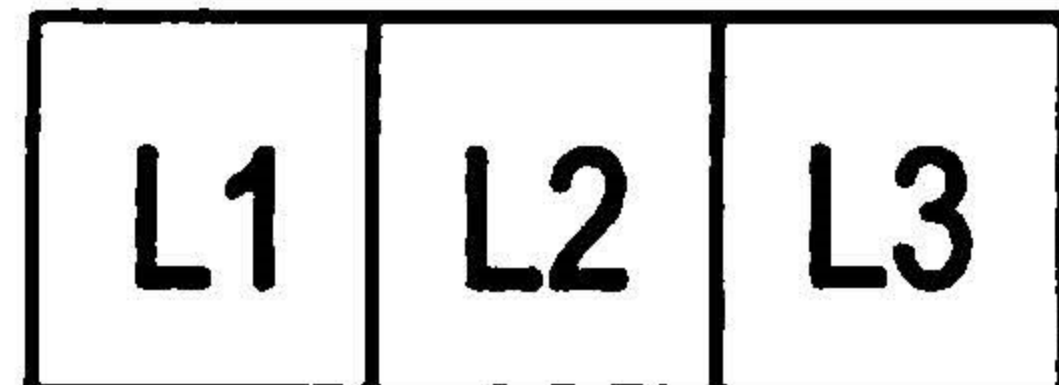
WATER TECHNOLOGY OF PENSACOLA, INC.

ABS SYSTEM CONTROL PANEL (R-1E-P) STANDARD FLOW
ELECTRIC ACTUATOR *w/BMS*

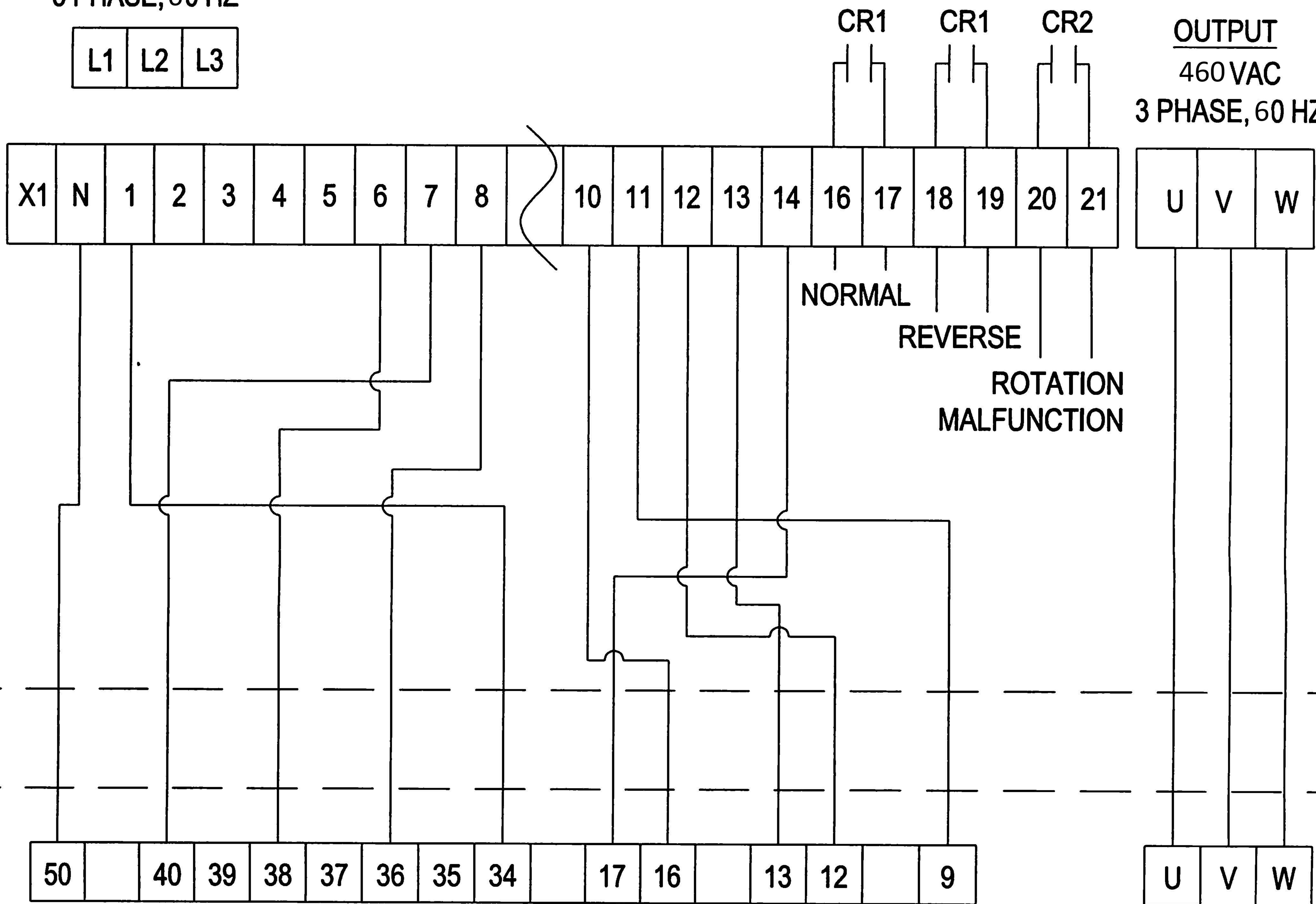
DRAWN:	APPR:	REV:
CHECKED:	DATE: 03-04-2019	—

ATB CONTROL PANEL

INPUT
460 VAC
3 PHASE, 60 HZ



OUTPUT
460 VAC
3 PHASE, 60 HZ



AUMA ELECTRIC ACTUATOR

NOTE: AUMA factory wiring in AUMA cap sometimes comes from AUMA with a Jumper installed between terminals 17 and 49, but it should be installed between terminals 18 and 50 (with another Jumper installed between 34 and 49).
ATB installs Jumpers between terminals 34 and 49; 34 and 35; and 37 and 39.

WATER TECHNOLOGY OF PENSACOLA, INC.		
CONNECTIONS BETWEEN ATB CONTROL PANEL (R-1E) AND AUMA ELECTRIC ACTUATOR		
DRAWN: RMW	APPR: WWB	REV: —
CHECKED: JAF	DATE: 09/14	